



**DURHAM CATHOLIC
DISTRICT SCHOOL BOARD**
Learning and Living in Faith

Brooklin French Immersion Study

Public Meeting 2

Wednesday November 4, 2020

7:00 – 9:00 p.m.



Rooted in Faith
Excellence | Equity | Engagement



**DURHAM CATHOLIC
DISTRICT SCHOOL BOARD**
Learning and Living in Faith

Land Acknowledgement

We here in the Durham region respectfully acknowledge that we are on the traditional lands of the Mississaugas of Scugog Island.



Rooted in Faith
Excellence | Equity | Engagement



**DURHAM CATHOLIC
DISTRICT SCHOOL BOARD**
Learning and Living in Faith

Opening Prayer

Lord God,

Inspire us to listen with attention and patience to each other, to share with courage and generosity, and to welcome the ideas of all.

May this meeting help unite us in our vision and strengthen us in our purpose to best serve the needs of all of our students.

Amen.



Rooted in Faith
Excellence | Equity | Engagement



Welcome

- Welcome & Opening Remarks
- Introduction of presenters
 - Superintendent Winn, Whitby Family of Schools Superintendent
 - Superintendent O'Reilly, Superintendent of Education
 - Superintendent Grieve, Superintendent of Facilities Services
 - Superintendent Putnam, Superintendent of Business
 - Carol Caputo, French Immersion Program Consultant
 - Jody Dale, Assistant Planner
 - Daniel Carlin, Manager of Planning, Admissions and Capital





Presentation Format

- Technical difficulties (Log out and back in to clear any issues)
- Ensure your name is used when logging in to capture for attendance purposes
- Questions are to be **written** and posted only in the Q&A area of the virtual meeting. There will be no **verbally** asked Questions from the public. If you are having trouble posting a question during the presentation you can submit your questions via email (planning@dcdsb.ca) or phone (905) 576-6150 Ext. 42252
- Questions and Answer Periods are scheduled during the meeting (questions will be reviewed and answered verbally – please note that there may be silent pauses while questions are reviewed)
- In order for questions to be answered, please include your name and associated School when posting all questions
- All questions and answers will be posted on our website after the meeting
- Tonight's power-point presentation is on the website for reference





Agenda

1. Land Acknowledgement | Opening Prayer
2. Welcome
3. Introduction of Committee Members
4. Meeting Dates and Locations | Meeting Norms
5. Background Information | Development in Brooklin
6. FI Program Options
7. Future Meeting Content
8. Communication Protocol
9. Closing Prayer





Committee Members

1. Gerard Winn, Superintendent of Education (Chair)
2. Mariah O'Reilly, Superintendent of Education
3. Scott Grieve, Superintendent of Facilities Services
4. Ryan Putnam, Superintendent of Business
5. Daniel Carlin, Manager of Planning, Admissions and Capital
6. Jackie McVeigh, Manager of Human Resources
7. Kelly Mechoulan, Manager of Durham Student Transportation Services
8. David Malleau, Principal St. Leo Catholic School
9. Stephanie Richard, Principal St. John Paul II Catholic School
10. James Tremblay, Principal St. Bridget Catholic School
11. Jody Dale, Assistant Planner
12. Carol Caputo, French language Consultant

12. Jennifer Bastarache & Amanda Roffey, Communications
13. Luetasha Watkins, Manager Early Learning and Childcare
14. Lori Lane, Senior Administrative Assistant
15. School Council Chair (Representative for each school)
16. OECTA (Elementary Representatives for each school)
17. CUPE (Representatives for each school)
18. YMCA (Child Care Operators)
19. Early ON Representative





**DURHAM CATHOLIC
DISTRICT SCHOOL BOARD**
Learning and Living in Faith

Meeting Dates & Locations

Committee Meetings

Tuesday February 13	1pm to 3 pm	HR meeting room (650 Rossland Road)
Thursday February 20	1pm to 3 pm	Pope Francis Centre (652 Rossland Road)
Friday, October 16	9:15 to 11:15 am	Virtual - Microsoft Teams
Friday, November 13	9:45 to 11:15 am	Virtual - Microsoft Teams

Public Meetings

Thursday February 20	7 pm to 9 pm	St. Leo CS Gym (120 Watford Street)
Wed., November 4	7 pm to 9 pm	Virtual - Microsoft Teams
Wed., November 25	7 pm to 9 pm	Virtual - Microsoft Teams



Rooted in Faith
Excellence | Equity | Engagement



Committee Mandate

The Board of Trustees approved the following on January 27, 2020

- Approved the formation of a Brooklin French Immersion Study Committee as outlined in the report dated January 27, 2020
- Requested the Committee to prepare a report recommending a preferred option by June 2020 (which has been postponed to December 2020 because of delay due to COVID-19)





Committee Mandate

The task of the Committee is to:

- Review all available data; previous FI reports
- Review all of the potential solutions to address the French Immersion (FI) programs at St. Leo and St. John Paul II Catholic Schools
- Recommend a preferred option for the consolidation of the two existing FI programs
- Recommend a method to implement the preferred alternative





**DURHAM CATHOLIC
DISTRICT SCHOOL BOARD**
Learning and Living in Faith

Trustee Mandate

The decision regarding the proposal to ensure long-term sustainability of French Immersion programming and the method that will be used to implement the final recommendations rests with the Board of Trustees.

The board will receive monthly updates between February 2020 and June 2020 (with a new extension to November 2020)



Rooted in Faith
Excellence | Equity | Engagement



Meeting Norms

Meetings will:

- Present a clear agenda
- Start on time and respect the time limitations that have been established
- Allow opportunities for participants to provide comments in virtual format
- Record all questions at the meeting to be added to a Frequently Asked Questions List (FAQs List)
- Release a meeting summary/debrief after the meeting



Meeting Norms (cont'd)

Meetings will:

- Be open to all members of the Brooklin Catholic School Communities
- Demonstrate transparency, accountability and accessibility in the eyes of the public
- Provide the public with a means to gain an understanding of the study summary
- Be conducted in a manner that reflects the goals, values and vision of the Board





**DURHAM CATHOLIC
DISTRICT SCHOOL BOARD**
Learning and Living in Faith

Background Data



Rooted in Faith
Excellence | Equity | Engagement



St. Leo CS Historical FI Enrolment

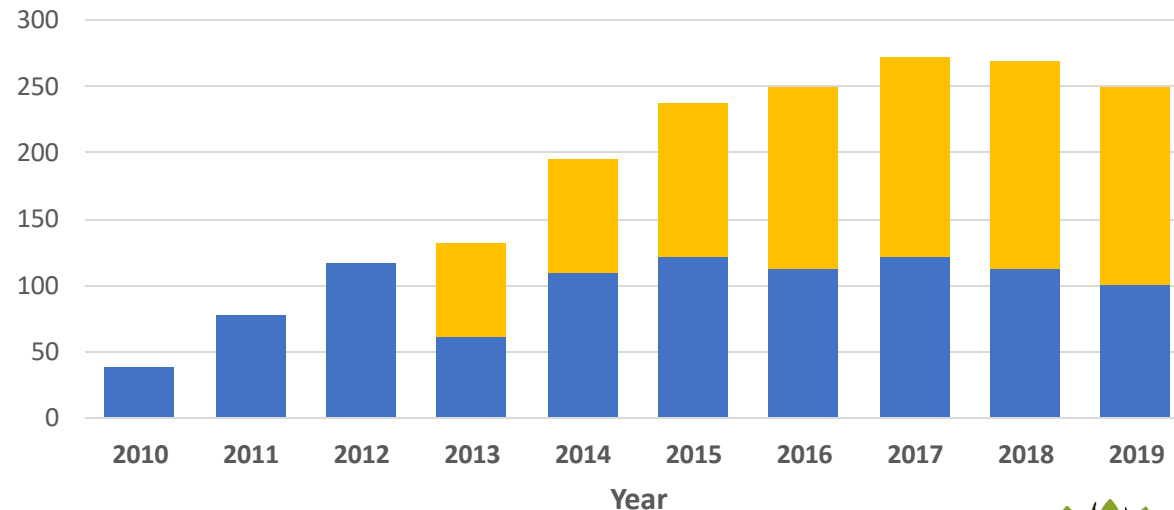
Year	Gr1	Gr2	Gr3	Gr4	Gr5	Gr6	Gr7	Gr8	Total
2010	38	0	0	0	0	0	0	0	38
2011	45	33	0	0	0	0	0	0	78
2012	45	41	31	0	0	0	0	0	117
2013	19	14	11	17	0	0	0	0	61
2014	24	20	27	22	17	0	0	0	110
2015	19	22	14	27	22	17	0	0	121
2016	11	15	20	11	24	22	10	0	113
2017	13	14	12	21	11	22	21	8	122
2018	9	11	14	11	20	11	17	19	112
2019	11	9	9	12	12	20	9	18	100

St. John Paul II CS Historical FI Enrolment

Year	Gr1	Gr2	Gr3	Gr4	Gr5	Gr6	Gr7	Gr8	Total
2013	24	16	18	13	0	0	0	0	71
2014	18	22	15	17	13	0	0	0	85
2015	31	14	22	14	19	16	0	0	116
2016	26	29	13	22	13	19	15	0	137
2017	20	25	27	14	23	11	17	14	151
2018	24	17	24	29	15	25	8	15	157
2019	14	21	15	26	28	15	25	6	150

HISTORICAL FRENCH IMMERSION DATA

**Historical French Immersion Enrolment
 St. Leo CS and St. John Paul II Cs**



■ St Leo FI Program ■ St John Paul II FI Program



This excludes enrolment from the EF program

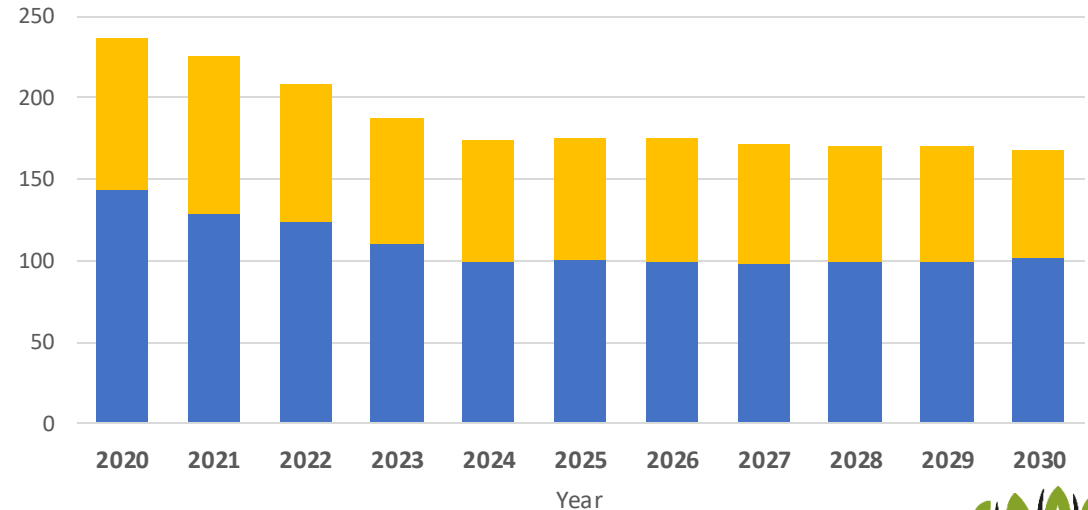


PROJECTED FRENCH IMMERSION DATA

St. Leo CS Projected FI Enrolment

Year	Gr1	Gr2	Gr3	Gr4	Gr5	Gr6	Gr7	Gr8	Total
2020	15	14	7	9	9	11	19	10	94
2021	11	14	14	7	8	8	14	20	96
2022	15	10	13	13	7	7	7	14	85
2023	12	13	9	12	12	6	7	7	78
2024	10	11	12	9	10	11	5	6	75
2025	13	9	10	11	8	10	10	5	75
2026	12	12	8	9	10	7	9	9	76
2027	12	11	10	8	8	9	6	8	73
2028	12	11	10	10	7	8	8	6	71
2029	11	10	10	9	9	6	7	8	70
2030	10	10	9	9	8	8	6	7	67

Projected French Immersion Students St. Leo CS and St. John Paul II CS



St. John Paul II CS Projected FI Enrolment

Year	Gr1	Gr2	Gr3	Gr4	Gr5	Gr6	Gr7	Gr8	Total
2020	12	15	15	12	26	26	14	23	143
2021	14	13	15	14	11	25	24	14	129
2022	13	13	12	15	14	10	23	23	124
2023	14	12	12	12	15	14	10	22	110
2024	15	13	11	12	12	14	13	9	99
2025	15	13	12	11	12	12	13	12	100
2026	15	13	13	12	11	12	11	13	99
2027	15	14	13	13	12	11	11	10	98
2028	15	14	13	13	13	12	10	10	99
2029	15	14	13	13	13	12	11	10	100
2030	15	14	13	13	13	12	11	10	101

■ St. John Paul II CS ■ St. Leo CS

Note: 2020 totals include both in-person and virtual students from the respective schools.





PROJECTED ENROLMENT DATA

St. John Paul II	2020	2021	2022	2023	2024	2025	2026	2027	2028	2029	2030
Regular Track	206	203	192	187	177	173	171	178	182	199	215
French Immersion	143	129	124	110	99	100	99	98	99	100	101
Total	349	332	316	297	276	274	270	276	281	298	316
<i>Capacity</i>	<i>458</i>	<i>458</i>	<i>458</i>	<i>458</i>	<i>458</i>	<i>458</i>	<i>458</i>	<i>458</i>	<i>458</i>	<i>458</i>	<i>458</i>
Utilization	76%	73%	69%	65%	60%	60%	59%	60%	61%	65%	69%

St. Leo CS	2020	2021	2022	2023	2024	2025	2026	2027	2028	2029	2030
Regular Track	132	118	105	99	95	94	103	113	122	130	140
French Immersion	94	96	85	78	75	75	76	73	71	70	67
Total	226	214	190	176	170	170	179	186	193	200	207
<i>Capacity</i>	<i>266</i>	<i>266</i>	<i>266</i>	<i>266</i>	<i>266</i>	<i>266</i>	<i>266</i>	<i>266</i>	<i>266</i>	<i>266</i>	<i>266</i>
Utilization	85%	80%	72%	66%	64%	64%	67%	70%	72%	75%	78%





**DURHAM CATHOLIC
DISTRICT SCHOOL BOARD**
Learning and Living in Faith



Existing French Immersion Boundaries



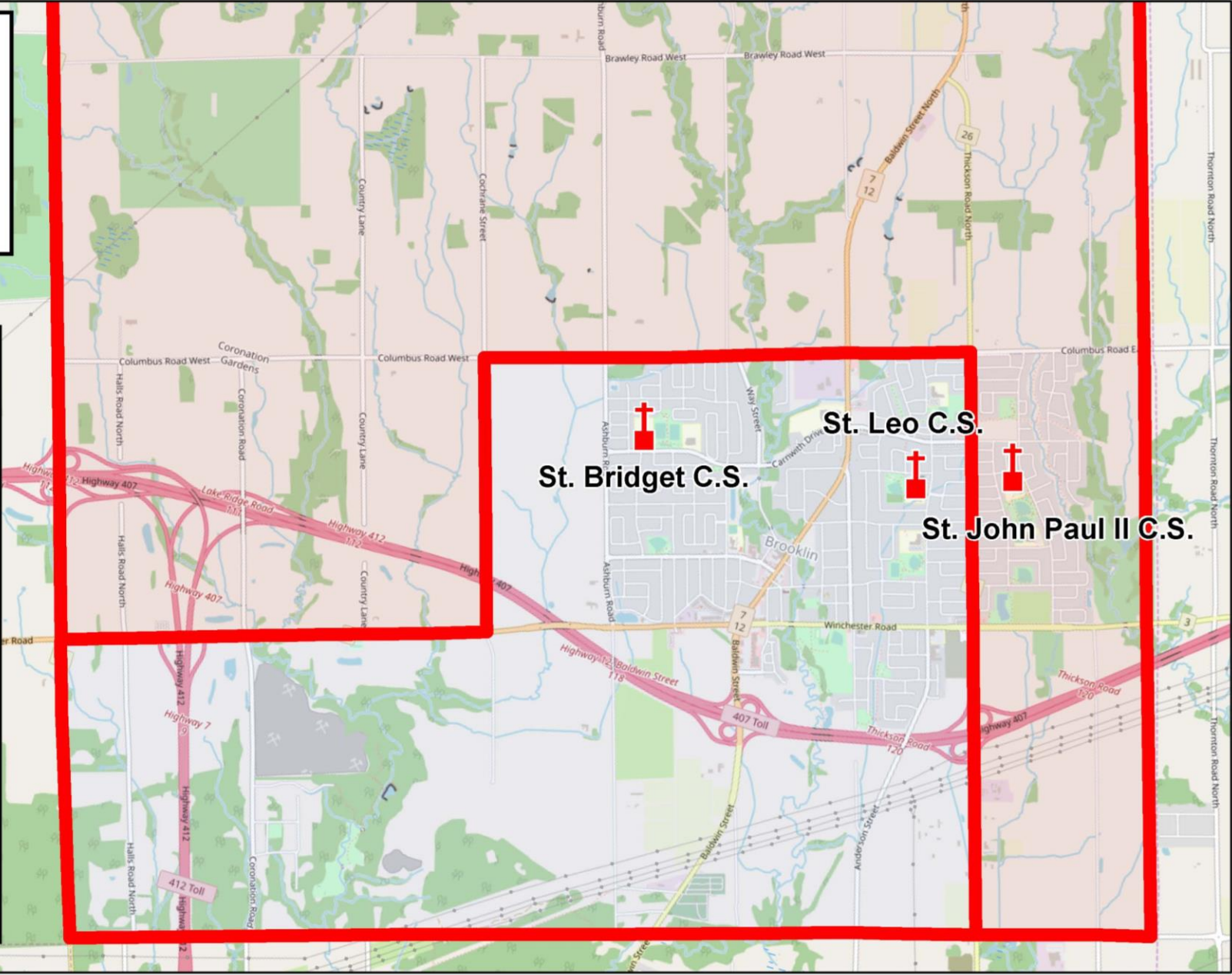
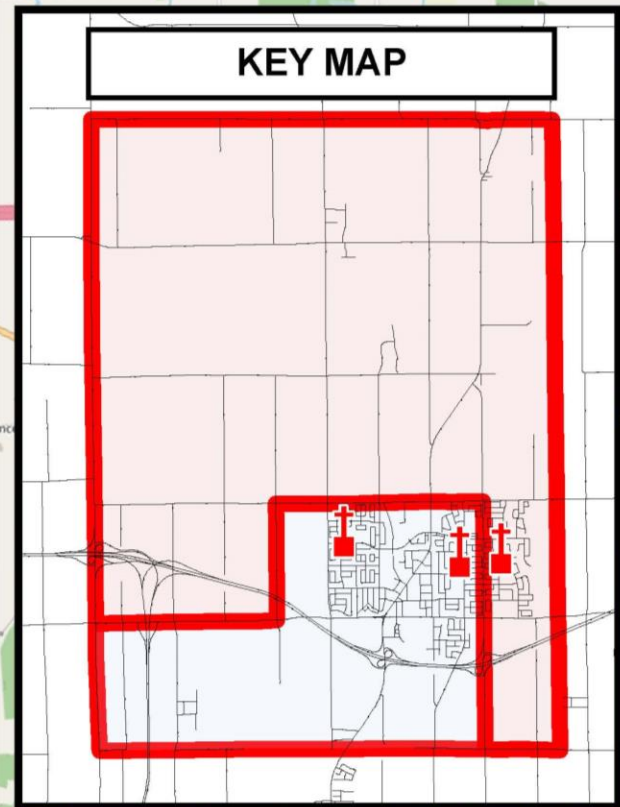
Rooted in Faith
Excellence | Equity | Engagement

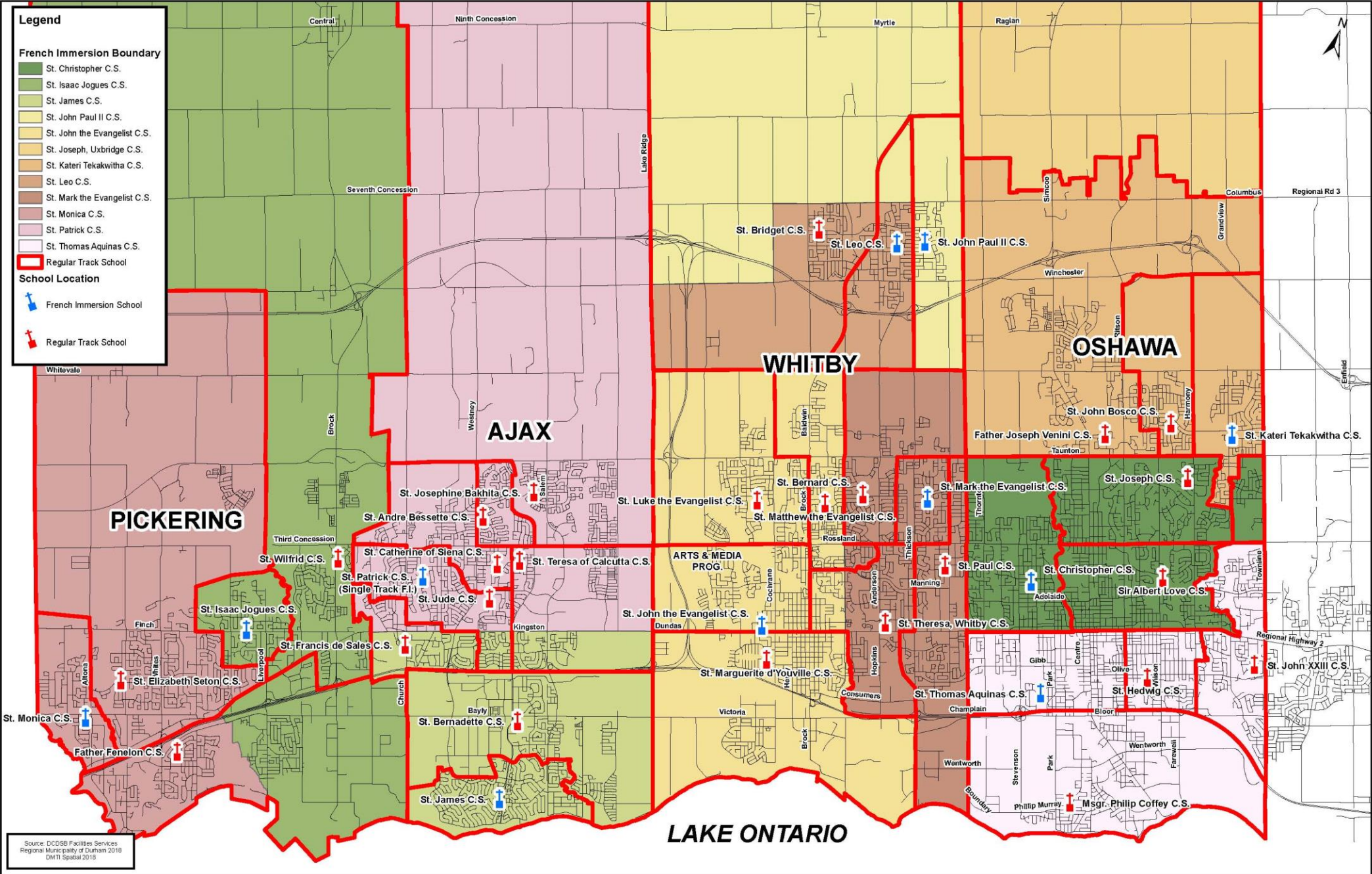
DCDSB - Village of Brooklin Catholic Elementary Schools School Location and French Immersion Boundary Map

Legend

-  School Location
-  St. Leo C.S. French Immersion Boundary
-  St. John Paul II C.S. French Immersion Boundary

KEY MAP







**DURHAM CATHOLIC
DISTRICT SCHOOL BOARD**
Learning and Living in Faith

Future Development



Rooted in Faith
Excellence | Equity | Engagement



Growth and Development Policies

Growth of the Brooklin Urban Area is governed by several policies established at a provincial level and then distilled down to local planning

- Provincial Policy Statement 2020;
- Bill 108 More Homes More Choices Act;
- The Growth Plan for the Greater Golden Horseshoe (2018) (the “Growth Plan”);
- The Durham Regional Official Plan and ROPA 128;
- Growing Durham: Recommended Growth Scenario and Policy Directions (2008) (“Growing Durham”);
- The Town of Whitby Official Plan and OPA 90
- Brooklin Secondary Plan



Future Development

Concept and Draft Plans of Subdivision have been submitted for lands as shown on the map.

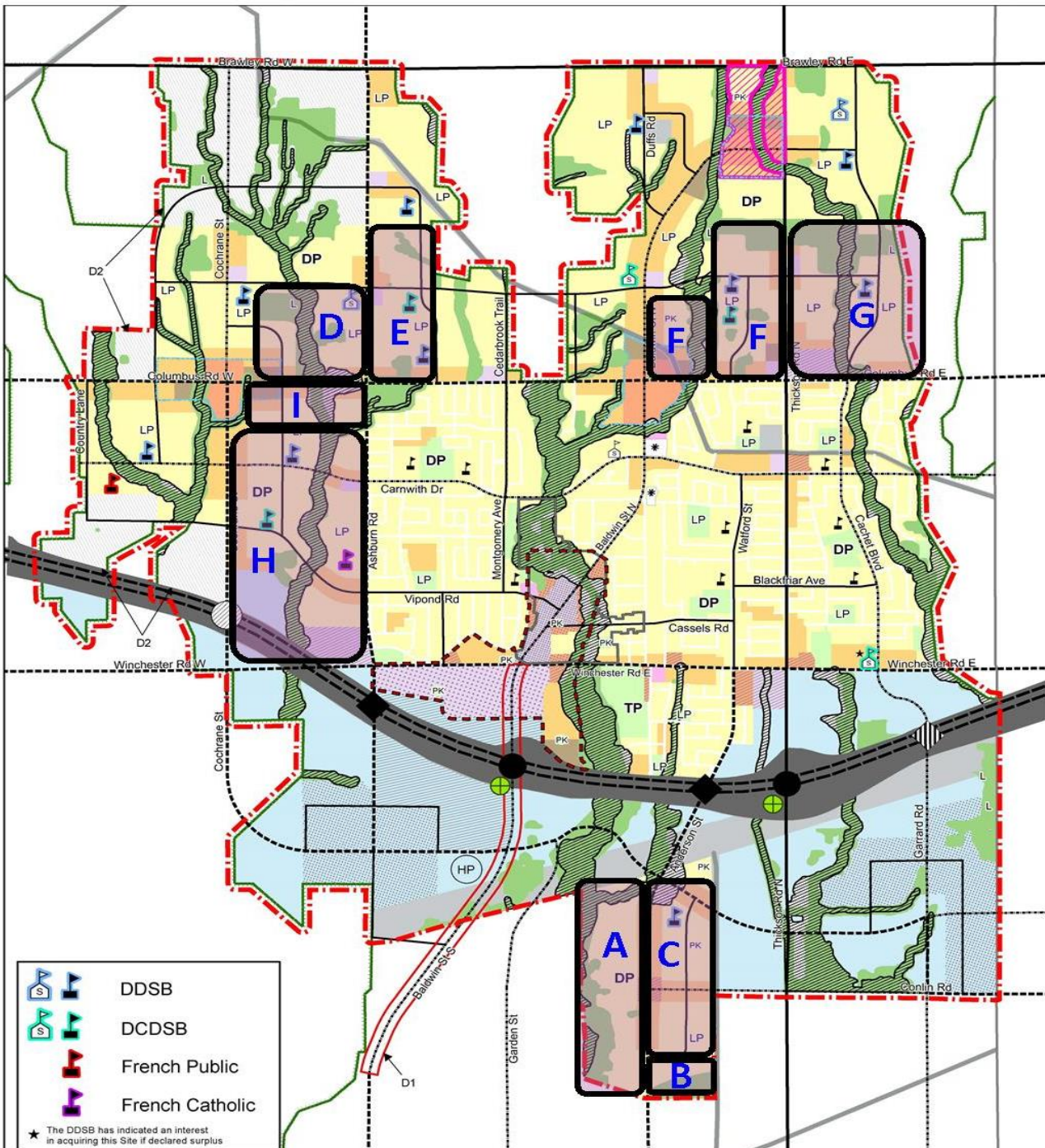
- Low density housing is approximately 60% of the total units submitted, 3,000 +/-
- Medium Density housing (Townhouses) is approximately 40% of the total units submitted, 2,000 +/-
- The Boards Catholic elementary yield is .16 students per unit.
- 820 +/- students are projected based on the current plans submitted.

What do the colours mean?

- Yellow areas are low density development
- Orange is medium density development
- Green areas are parks and open spaces
- Blue is employment lands
- LP & DP = Local & District Park



Rooted in Faith
Excellence | Equity | Engagement





Future Development

BROOKLIN EXPANSION SECONDARY PLAN AREA

CONCEPTUAL AND DRAFT PLANS OF SUBDIVISION INFORMATION

UPDATED SEPT 2020

MAP LOC.	RESIDENTIAL DEV. AREA (ha)	DEVELOPER	PLAN	UNIT TYPE			TOT. ELE. YIELD 16%	SCHOOL SITE	LOCATION
				SF & SD (LD)	TH (MD)	TOTAL			
A	17.01	Highmark Homes	Conceptual	275	405	680	109	NO	N OF CONLIN E SIDE OF ANDERSON
B	2.97	Mosaik Homes	Conceptual	9	224	233	37	NO	NE CORNER OF CONLIN AND ANDERSON
C	10.98	Condl and Developments	Conceptual	228	52	280	45	NO	NE CORNER OF CONLIN AND ANDERSON
D*	13.46	The Biglieri Group	Conceptual	240	264	504	81	NO	NW CORNER OF COLUMUS AND ASHBURN
E*	15	Lakeview Homes	Conceptual	339	70	409	65	YES 7.4ac	NE CORNER OF ASHBURN & COLUMBUS
F	17.11	Abacus Equity Infusion	SW-2020-01	282	260	542	87	YES 5.5ac	BTN BALDWIN & THICKSON, N SIDE COLUMBUS
G	27.05	Brooklin N-E Dev. CR Inc.	Conceptual	559	140	699	112	NO	NE CORNER OF THICKSON & COLUMBUS
H*	40	Brooklin Dev. Gen. Partner	SW-2020-02	877	426	1,303	208	YES 5.9sc	BTN COCHRANE & ASBURN, N OF HWY 407
I*	12	Fieldgate Homes	SW-2020-03	115	191	306	49	NO	BTN COCHRANE & ASBURN, S OF COLUMBUS
J	11.27	7150 Thicksn Dev. Ltd	SW-2020-04	64	98	162	26	NO	BTN BALDWIN & THICKSON, N SIDE COLUMBUS
TOTAL (ha)	166.85	TOTAL UNITS		2,988	2,130	5,118	819	3 Sites	TOTALS REFLECT "FULL BUILD-OUT"
		YIELD		0.16	0.16	0.16			
		TOTAL STUDENTS		478	341	819			

D* - SF lots include School Site

E* Res. Dev. Area is an approximate

H* Res. Dev. Area is an approximate

I* Res. Dev. Area is an approximate



Rooted in Faith
Excellence | Equity | Engagement



**DURHAM CATHOLIC
DISTRICT SCHOOL BOARD**
Learning and Living in Faith

Monitoring Q&A Box



Rooted in Faith
Excellence | Equity | Engagement



**DURHAM CATHOLIC
DISTRICT SCHOOL BOARD**
Learning and Living in Faith

French Immersion Options

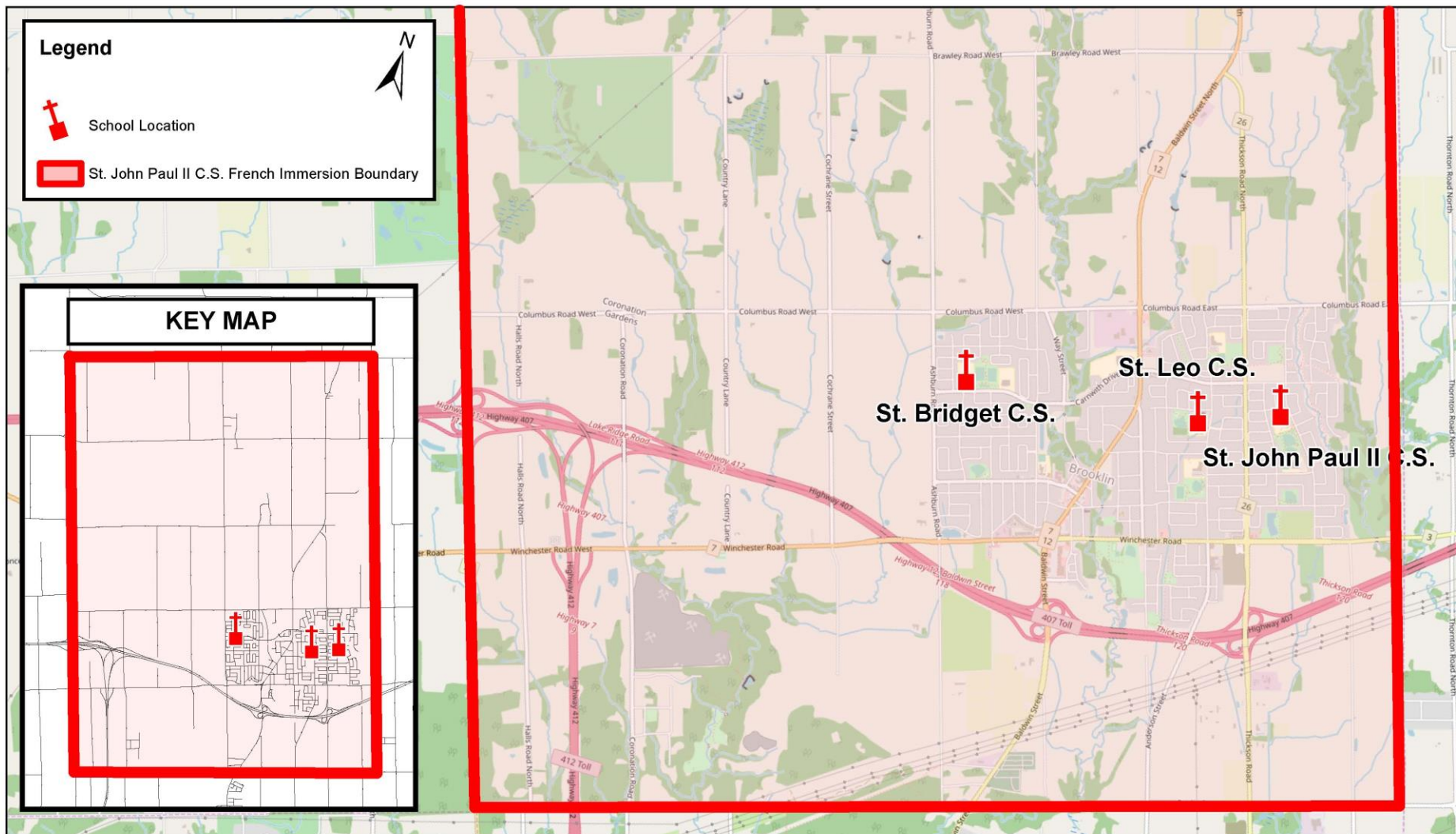


Rooted in Faith
Excellence | Equity | Engagement



Single FI Boundary

DCDSB - Village of Brooklin Catholic Elementary Schools
 School Location and Proposed NEW St. John Paul II C.S. French Immersion Boundary Map - Option 2





Staff have examined the following options for the consolidation of the Brooklin French Immersion (FI) Program:

1. All of the FI to be located at St. Leo CS in 2021
2. Grade 1-6 FI to be located at St. Leo CS in 2021 (Grades 7&8 to phase out of St. John Paul II CS)
3. All of the FI to be located at St. John Paul II CS in 2021
4. Grade 1-6 FI to be located at St. John Paul II CS in 2021 (Grades 7&8 to phase out of St. Leo CS)
5. All of the FI to be located at St. Bridget CS in 2021





All of the FI to be located at St. Leo CS in 2021

- If you are registering your child for FI for September 2021, they will be attending St. Leo CS.
- If your child is currently in Grade 1-7 FI in either school they will be attending St. Leo CS for September 2021
- St. Leo CS will continue to have a JK-8 Regular Track (RT) program
- St. John Paul II CS will continue to have a JK-8 Regular Track (RT) program
- The FI boundary for St. Leo CS will absorb the St. John Paul II CS FI boundary
- The RT boundaries for each of the schools will remain as they are now (pending a future accommodation review of the Catholic Schools in Brooklin as outlined in the 2020-2024 DCDSB Long-Term Accommodation Plan)





OPTION 1		ACTUAL		PROJECTED			
School		2019	2020	2021	2022	2025	2030
St. Leo C.S.	RT	121	132	118	105	94	140
St. Leo C.S.	FI	100	94	226	209	176	168
Total		221	226	343	314	270	308
Capacity		266	266	266	266	266	266
Utilization		83%	85%	129%	118%	101%	116%
Portables		0	0	3	2	0	2

		ACTUAL		PROJECTED			
School		2019	2020	2021	2022	2025	2030
St. John Paul II C.S.	RT	221	206	203	192	173	215
St. John Paul II C.S.	FI	150	143	0	0	0	0
Total		371	349	203	192	173	215
Capacity		458	458	458	458	458	458
Utilization		81%	76%	44%	42%	38%	47%
Portables		0	0	0	0	0	0





Grade 1-6 FI to be located at St. Leo CS in 2021 (Grades 7&8 to phase out of St. John Paul II CS)

- If you are registering your child for FI for September 2021, they will be attending St. Leo CS.
- If your child is currently in Grade 1-5 FI in either school they will be attending St. Leo CS for September 2021
- If your child is currently in Grade 6&7 FI at St. John Paul II CS they will stay until the end of Grade 8
- St. Leo CS will continue to have a JK-8 Regular Track (RT) program
- St. John Paul II CS will continue to have a JK-8 Regular Track (RT) program
- The FI boundary for St. Leo CS will absorb the St. John Paul II CS FI boundary
- The RT boundaries for each of the schools will remain as they are now (pending a future accommodation review of the Catholic Schools in Brooklin as outlined in the 2020-2024 DCDSB Long-Term Accommodation Plan)





OPTION 2		ACTUAL		PROJECTED			
School		2019	2020	2021	2022	2025	2030
St. Leo C.S.	RT	121	132	118	105	94	140
St. Leo C.S.	FI	100	94	188	162	176	168
Total		221	226	306	267	270	308
Capacity		266	266	266	266	266	266
Utilization		83%	85%	115%	100%	101%	116%
Portables		0	0	2	0	0	2

		ACTUAL		PROJECTED			
School		2019	2020	2021	2022	2025	2030
St. John Paul II C.S.	RT	221	206	203	192	173	215
St. John Paul II C.S.	FI	150	143	38	23	0	0
Total		371	349	241	215	173	215
Capacity		458	458	458	458	458	458
Utilization		81%	76%	53%	47%	38%	47%





All of the FI to be located at St. John Paul II CS in 2021

- If you are registering your child for FI for September 2021, they will be attending St. John Paul II CS
- If your child is currently in Grade 1-7 FI in either school they will be attending St. John Paul II CS for September 2021
- St. John Paul II CS will continue to have a JK-8 Regular Track (RT) program
- St. Leo CS will continue to have a JK-8 Regular Track (RT) program
- The FI boundary for St. John Paul II CS will absorb the St. Leo CS FI boundary
- The RT boundaries for each of the schools will remain as they are now (pending a future accommodation review of the Catholic Schools in Brooklin as outlined in the 2020-2024 DCDSB Long-Term Accommodation Plan)





OPTION 3		ACTUAL		PROJECTED			
School		2019	2020	2021	2022	2025	2030
St. John Paul II C.S.	RT	221	206	203	192	173	215
St. John Paul II C.S.	FI	150	143	226	209	176	168
Total		371	349	429	401	349	383
Capacity		458	458	458	458	458	458
Utilization		81%	76%	94%	87%	76%	84%

		ACTUAL		PROJECTED			
School		2019	2020	2021	2022	2025	2030
St. Leo C.S.	RT	121	132	118	105	94	140
St. Leo C.S.	FI	100	94	0	0	0	0
Total		221	226	118	105	94	140
Capacity		266	266	266	266	266	266
Utilization		83%	85%	44%	40%	35%	53%





Grade 1-6 FI to be located at St. John Paul II CS in 2021 (Grades 7 & 8 to phase out of St. Leo CS)

- If you are registering your child for FI for September 2021, they will be attending St. John Paul II CS
- If your child is currently in Grade 1-5 FI in either school they will be attending St. John Paul II CS for September 2021
- If your child is currently in Grade 6&7 FI at St. Leo CS they will stay until the end of Grade 8
- St. John Paul II CS will continue to have a JK-8 Regular Track (RT) program
- St. Leo CS will continue to have a JK-8 Regular Track (RT) program
- The FI boundary for St. John Paul II CS will absorb the St. Leo CS FI boundary
- The RT boundaries for each of the schools will remain as they are now (pending a future accommodation review of the Catholic Schools in Brooklin as outlined in the 2020-2024 DCDSB Long-Term Accommodation Plan)





OPTION 4		ACTUAL		PROJECTED			
School		2019	2020	2021	2022	2025	2030
St. John Paul II C.S.	RT	221	206	203	192	173	215
St. John Paul II C.S.	FI	150	143	192	188	176	168
Total		371	349	395	380	349	383
Capacity		458	458	458	458	458	458
Utilization		81%	76%	86%	83%	76%	84%

		ACTUAL		PROJECTED			
School		2019	2020	2021	2022	2025	2030
St. Leo C.S.	RT	121	132	118	105	94	140
St. Leo C.S.	FI	100	94	34	14	0	0
Total		221	226	152	119	94	140
Capacity		266	266	266	266	266	266
Utilization		83%	85%	57%	45%	35%	53%





All of the FI to be located at St. Bridget CS in 2021

- If you are registering your child for Grade 1 FI for September 2021, they will be attending St. Bridget CS
- If your child is currently in Grade 1-7 FI in any school, they will be attending St. Bridget CS for September 2021
- St. Leo CS will continue to have a JK-8 Regular Track (RT) program
- St. John Paul II CS will continue to have a JK-8 Regular Track (RT) program
- St. Bridget CS will continue have a JK-8 Regular Track (RT) program
- The FI boundary for St. Bridget CS will absorb the St. John Paul II CS and St. Leo CS FI boundary
- The RT boundaries for each of the schools will remain as they are now (pending a future accommodation review of the Catholic Schools in Brooklin as outlined in the 2020-2024 DCDSB Long-Term Accommodation Plan)





OPTION 5		ACTUAL		PROJECTED			
School		2019	2020	2021	2022	2025	2030
St. John Paul II C.S.	RT	221	206	203	192	173	215
St. John Paul II C.S.	FI	150	143	0	0	0	0
Total		371	349	203	192	173	215
Capacity		458	458	458	458	458	458
Utilization		81%	76%	44%	42%	38%	47%

		ACTUAL		PROJECTED			
School		2019	2020	2021	2022	2025	2030
St. Leo C.S.	RT	121	132	118	105	94	140
St. Leo C.S.	FI	100	94	0	0	0	0
Total		221	226	118	105	94	140
Capacity		266	266	266	266	266	266
Utilization		83%	85%	44%	40%	35%	53%

		ACTUAL		PROJECTED			
School		2019	2020	2021	2022	2025	2030
St. Bridget C.S.	RT	393	370	365	345	360	592
St. Bridget C.S.	FI	0	0	226	209	176	168
Total		393	370	590	553	536	760
Capacity		513	513	513	513	513	513
Utilization		77%	72%	115%	108%	104%	148%
Portables		0	0	3	2	1	11





**DURHAM CATHOLIC
DISTRICT SCHOOL BOARD**
Learning and Living in Faith

Monitoring Q&A Box



Rooted in Faith
Excellence | Equity | Engagement



**DURHAM CATHOLIC
DISTRICT SCHOOL BOARD**
Learning and Living in Faith

Future Meeting Content



Rooted in Faith
Excellence | Equity | Engagement



Implementation & Future Considerations

The final recommendation will have a more complete plan but the following will be considered:

- Intro to each school community
- Transition plans | COVID Protocol
- Transportation
- Staffing





**DURHAM CATHOLIC
DISTRICT SCHOOL BOARD**
Learning and Living in Faith

Future Meeting Content

1. Feedback and Analysis of Options
2. Implementation Plan



Rooted in Faith
Excellence | Equity | Engagement



**DURHAM CATHOLIC
DISTRICT SCHOOL BOARD**
Learning and Living in Faith

Communication Protocol

Dedicated phone line

(905) 576-6150 Ext. 42252

Email address

planning@dcdsb.ca

- Phone line and email will be checked on a daily basis
- Questions will be documented and shared with committee and the Board through a FAQ sheet
- Committee members are asked to bring all questions and concerns back to the committee
- Regular updates will be made to the website

Website

www.dcdsb.ca/boundaryreviews



Rooted in Faith
Excellence | Equity | Engagement



**DURHAM CATHOLIC
DISTRICT SCHOOL BOARD**
Learning and Living in Faith

Closing Prayer

Christ Has No Body (St. Teresa of Avila)

Christ has no body but yours,
No hands, no feet on earth but yours,
Yours are the eyes with which he looks
Compassion on this world,
Yours are the feet with which he walks to do good,
Yours are the hands, with which he blesses all the world.
Yours are the hands, yours are the feet,
Yours are the eyes, you are his body.
Christ has no body now but yours.



Rooted in Faith
Excellence | Equity | Engagement



**DURHAM CATHOLIC
DISTRICT SCHOOL BOARD**
Learning and Living in Faith

Thank You

Our Mission: We are called to celebrate and nurture the God-given talents of each student as we serve with excellence in the light of Christ.

